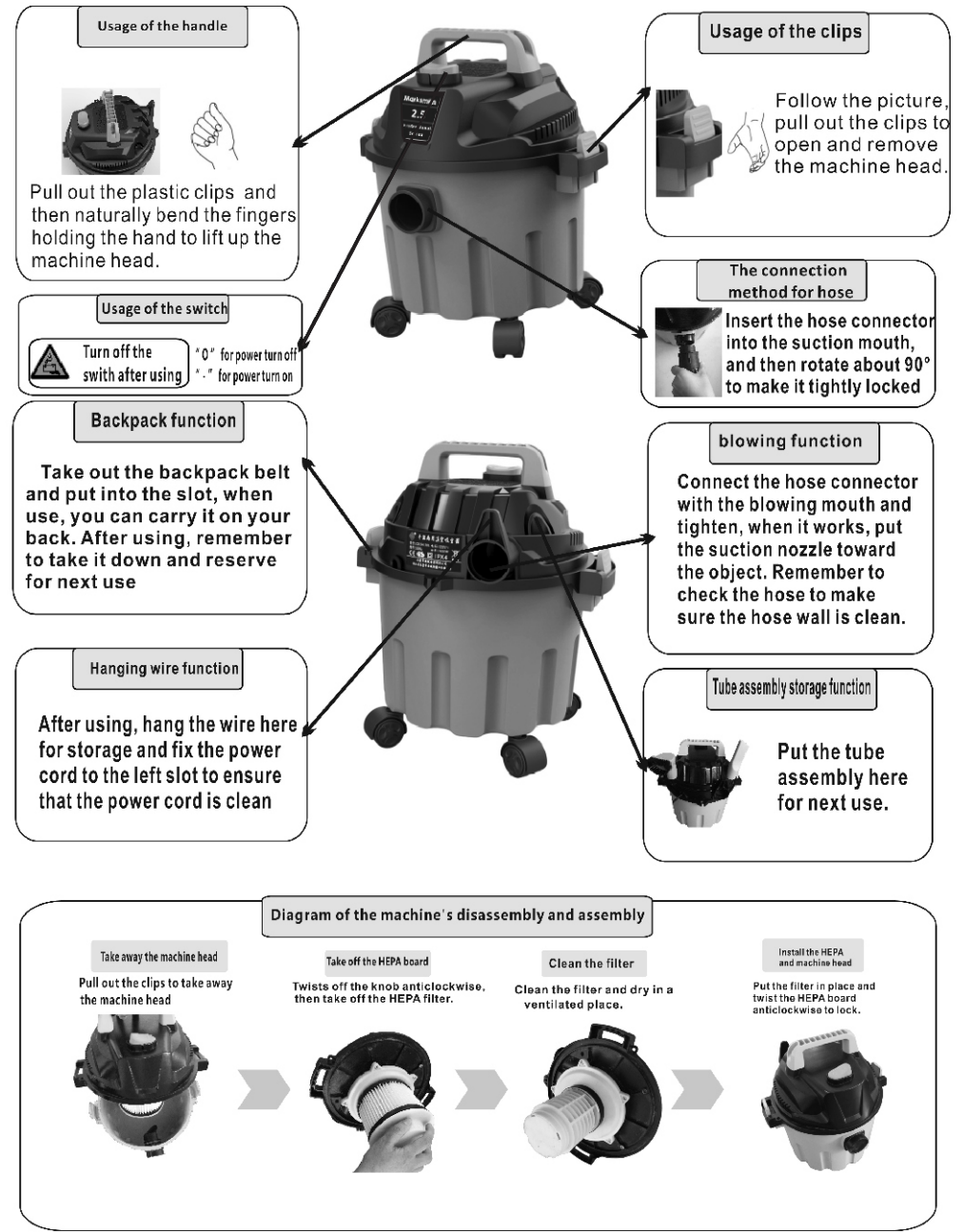


Technique Parameter

Model	Power (W)	Voltage (V)	Rate(HZ)
BJ 1623	800	120	60

The description and introduction of vacuum cleaner



WET&DRY VACUUM CLEANER  
INSTRUCTION MANUAL  
BJ 1623

Marksman™



●Please read the manual clearly before your using  
and keep it properly for future using

Troubleshooting

Problem	Analysis reasons	Solutions
Not work	1, Check whether the plug has been inserted tightly 2, Check the socket is power on or off	1, Re-insert the plug into the socket tightly 2, Ensure the socket is power on
Suction reducing	1, Check whether the hose, tube was blocked 2, Check whether the filter was blocked 3, Check whether the machine was fastened tightly 4, Check whether the air-out filter was blocked 5, Check whether the adjust window in the adjust handle(hose) is closed	1, Clean up the obstructions in time 2, Clean up or replace the filter
Big noise or unnormal noise	1, Check whether the filters were blocked 2, Check whether the hose, tube or accessories were blocked	1, Clean & maintain the filter 2, Clean up the obstructions

If you still can not solve the problem, please take it to the maintenance center, not repair by yourself.

Notice

This mark indicates that this product should not be disposed with other household wastes throughout the EU. To prevent possible harm to the environment or human health from uncontrolled waste disposal, recycle it responsibly to promote the sustainable reuse of material. To return your used device, please use the return and collection systems or contact the retailer where you purchase this machine, so the product can be recycled.



**⚠ ATTENTION to avoid fire or hurt etc.**

Do not move it when the clips unlocked.  
(To avoid damages when you moving it.)

Use wire and plug in a correct way  
**⚠ Please pull out the plug when you not use it.**  
(To avoid the bad insulation causing electric shock/the leakage of electricity or fires)

**Avoid incorrect operation**

- Do not put metal into the connector of this machine (To avoid electric shock)
- Do not pull the plug by the wire
- Do not pull or move the machine by pulling the hose  
(To avoid damages cause by falling)
- Please use the handle to move or pull it

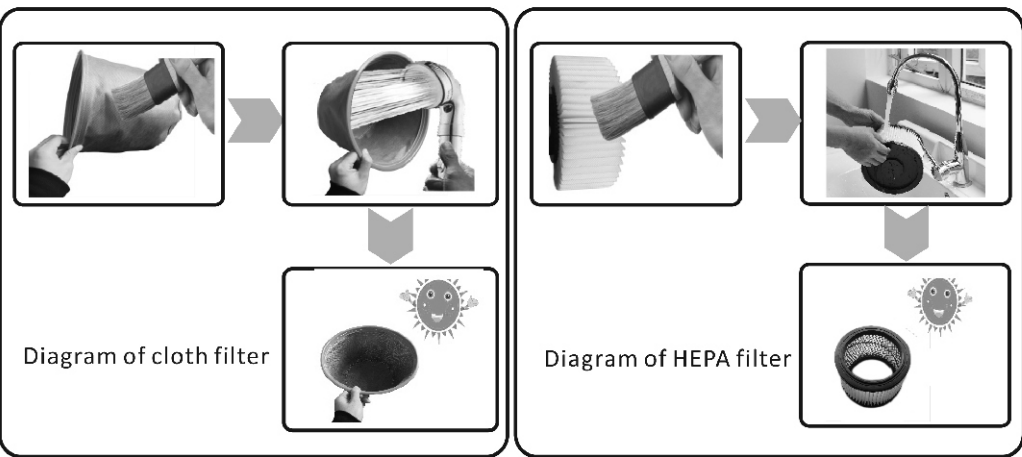
**Please keep it a proper distance away from fire/heat source or sunlight**  
(To avoid fires or out of shape)

Operate Requirements

To prolong the working life time

- Please not collect the following things in case caused breakdown or bad smell
  - Dehumidizer
  - Massive of powder(construction waste/powder of fire extinguisher)
  - Pet excreta etc.
  - Glass/tins/needles/toothpicks
  - Something easy to block the Hose(ropes/stockings)
- Please use the hose carefully (to avoid it damaged)
- To avoid the motor overheating Please not use it continually more than half an hour, otherwise this may reduce its working life time.
- When the tank is full of dust
- When the suction mouth is blocked
- When the hose, tube, nozzle is blocked
- Please not use the hose or the tube to collect dust directly to avoid wear
- Please use the floor brush or crevice nozzle etc.
- Please not block the air-outlet (To avoid out of shape caused by overheating)
- Please do not continually use it, when the suction mouth is blocked.
- Please check whether the cloth or HEPA filter was installed before using  
(To avoid the waste go into the motor directly, caused the burning)

Cleaning and maintenance



- Before cleaning, please turn off the power and pull off the plug.

Methods of cleaning:

Use brush to clean the dust on the filter

Use tap or shower wash the filter from inside to outside for better clean.

Put the filter in a well-ventilated place to air-dry it. Store it properly for your next use.

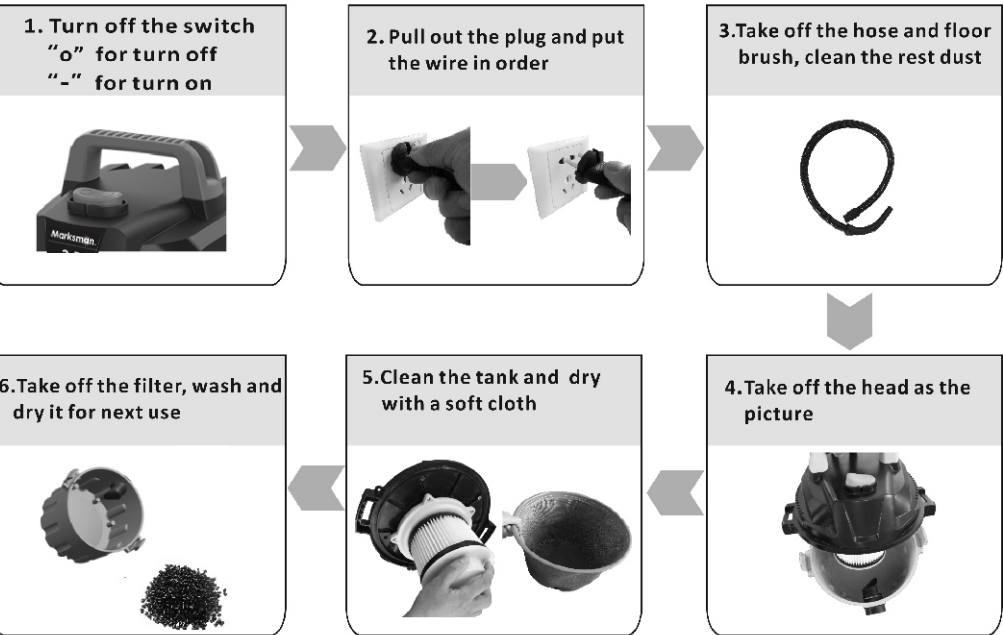
Note: After your washing

Be sure of intensive drying (To avoid bad smell or block)

Do not use air blower or another kind of hot-blast air drying it  
(To avoid causing failures due to out of shape)

Do not use detergent/bleach/thinner/alcohol etc.  
(to avoid causing cracks and fading color)

Instruction after use



Protective Device

Special instruction of the protective device

- When tank is full of water, the device will raise up, suction power will stop and abnormal noise indicate that the motor is running at a high speed. If this happened, you should cut off the power, and pour away the water. Return on the power, it will begin to work normally again
- When vacuum cleaner overturn or shaking, the device works, you should cut off the power and make it upright, then turn on the machine again.
- When tank is full of water, the device will raise up, suction power will cut off, please stop the working immediately.

Please pay your attention to the following items for your safety

Please observe the following security matters to avoid personal injury and property lose.

- Stands for the "prohibitive" content
- Stands for the "must perform" content
- Do not collect fire or inflammable etc. (To avoid fires or explosion)  
cigarette/gasoline/ printing ink/thinner etc.
- Do not use it when the plug or cable is damaged.  
(To avoid causing fire because of overheating)
- Do not use it when the plug or cable is damaged.  
(To avoid causing fire because of overheating)
- Correct use of the plug  
Please ensure the plug has insert into the socket tightly(To avoid electric shock or fires)  
Please use AC socket separately(To avoid causing fires when it work together with other machines)  
Pull out the plug before your maintain (To avoid electric shock)  
Clean dust on the plug regularly (To avoid causing bad insulation or fires)
- Incorrect operation
  - Do not wash by water ( besides washable parts)
  - Do not use in bathroom etc. damp environment
  - Do not disassembly, repair or transform it by yourself (To avoid fires or electronic shock)
  - The appliance can not be used by children and persons who has defects on physical/ sensory/mind, or lack of experience and knowledge(Unless they under supervision or instruction)
- Confirm the filter is installed when it working(To avoid the motor burning)
- Do not use wet hands to pull out the plug (To avoid electric shock)

Please cut off the power and remove the plug when there are failures happen.  
(To avoid causing smog/fires or electronic shock)

- Example of failures
- The appliance is not working even you open it
  - The machine is out of shape or hot
  - Please check and repair it to the designed center in time
  - When you pull the plug or wire sometime there is electricity and sometime not
  - The hose is damaged
  - Burnt smell
  - Quit work suddenly
  - Abnormal voice during your usage